



Ivy Tech-Indianapolis ↔ IUPUI Student Articulation

A Summary of Enrollment Trends among
Students Who Have Attended both Ivy Tech-
Indianapolis and IUPUI

Prepared by the IUPUI Office of
Information Management and Institutional Research

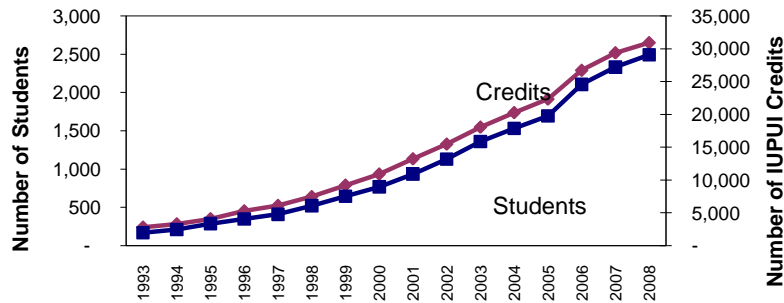
November 3, 2008

IUPUI Students Who Previously Enrolled at Ivy Tech-Indianapolis, Fall Semesters 1993-2008

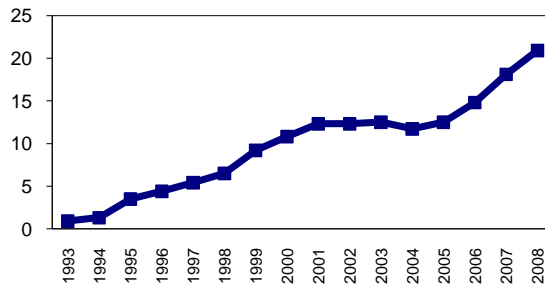
An increasing number of IUPUI students have previously attended Ivy Tech-Indianapolis. The number climbed to an all-time high of 2,650 in Fall 2008. During Fall 1993 few students had transferred any Ivy Tech coursework and so the overall average was less than one credit per enrollee. By 2001 this average climbed to twelve credits per student, even when including students who did not transfer any credit from Ivy Tech to IUPUI. The average reached a high of 20.9 credits for 2008.

Fall Semester	Number of Students	IUPUI Credits	Average Xfer Credits
1993	240	1,949	0.9
1994	283	2,427	1.3
1995	350	3,321	3.5
1996	453	4,050	4.4
1997	524	4,755	5.4
1998	639	6,068	6.5
1999	789	7,508	9.2
2000	934	8,939	10.8
2001	1,133	10,898	12.3
2002	1,325	13,164	12.3
2003	1,547	15,861	12.5
2004	1,737	17,859	11.7
2005	1,913	19,755	12.5
2006	2,289	24,567	14.8
2007	2,518	27,209	18.1
2008	2,650	29,076	20.9

Number of Students and Credit Hours



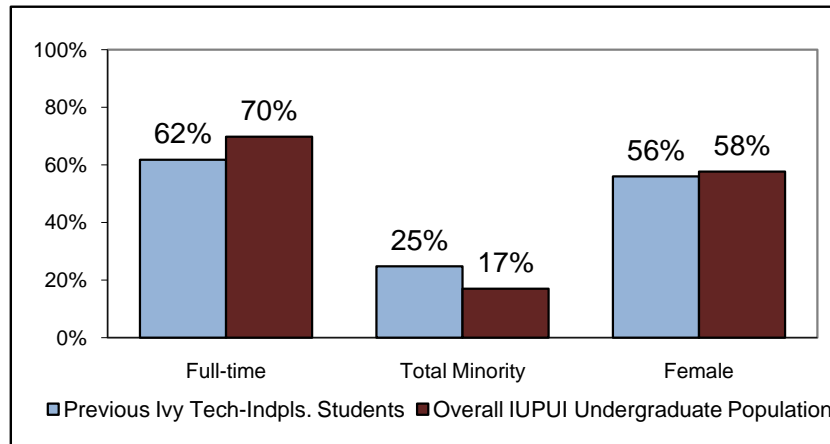
Average Transfer Credits



Enrollment Status, Ethnicity, and Gender of IUPUI Students who Previously Attended Ivy Tech-Indianapolis, Fall 2008

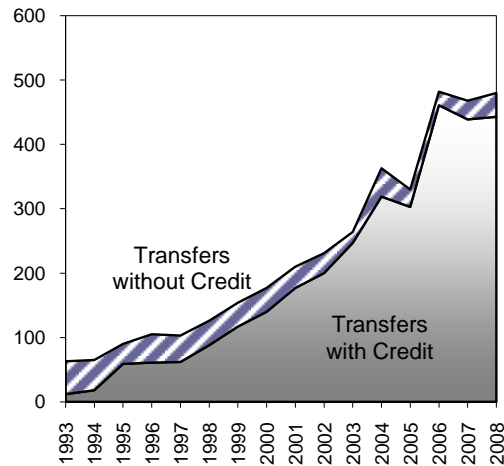
IUPUI students who previously attended Ivy Tech-Indianapolis are less likely to enroll on a full-time basis compared to the overall undergraduate student population at IUPUI. Demographically, Ivy Tech transfers to IUPUI include a higher percentage of minority students, particularly African American students, compared to the overall IUPUI undergraduate student body. The gender distribution of Ivy Tech-Indianapolis transfers is similar to that of the general undergraduate student population.

		Previous Ivy Tech- Indpls. Students	Overall IUPUI Undergraduate Population
Total Number of Students Enrolled Fall 2008		2,650	20,034
Enrollment Status (Fall 2008)	Full-time	62%	70%
	Part-time	38%	30%
Race/Ethnicity	Total Minority	25%	17%
	Asian American	5%	3%
	African American	17%	11%
	Hispanic American	2%	3%
	Native American	0%	0%
	All Others	75%	83%
Gender	Female	56%	58%
	Male	44%	42%



New Students from Ivy Tech-Indianapolis Transferring to IUPUI, Fall Semesters 1993-2008

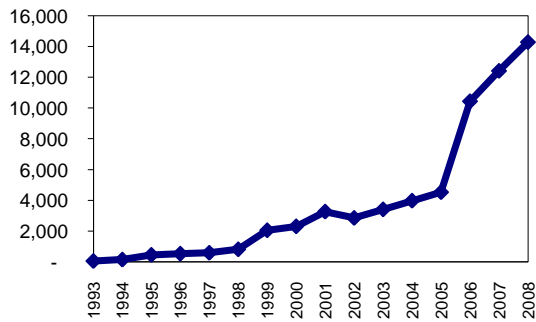
	Total Students	Students with Transfer Credit			
		Number	Percent	Credits Transferred	Average Credits
1993	63	12	19%	59	4.9
1994	65	18	28%	153	8.5
1995	90	59	66%	460	7.8
1996	105	61	58%	537	8.8
1997	103	62	60%	595	9.6
1998	126	88	70%	822	9.3
1999	154	117	76%	2,059	17.6
2000	177	140	79%	2,316	16.5
2001	210	177	84%	3,275	18.5
2002	231	200	87%	2,862	14.3
2003	264	247	94%	3,419	13.8
2004	363	319	88%	3,983	12.5
2005	330	303	92%	4,539	15.0
2006	482	461	96%	10,450	22.7
2007	468	439	94%	12,427	28.3
2008	480	443	92%	14,299	32.3



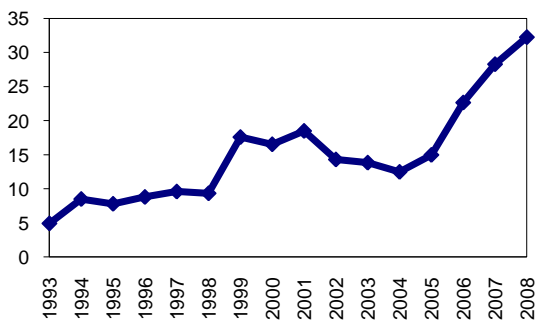
Note: Includes all new students who previously attended Ivy Tech-Indpls. Some transfers may have attended additional institutions.

When looking at only "new to IU" students transferring from Ivy Tech-Indianapolis to IUPUI, the increase in credit transfer becomes even more apparent. In fall 1993, less than one out of five new students entering IUPUI who had previously attended Ivy Tech-Indianapolis presented any transfer credit and those who did averaged just under five credits. Today, nine of ten Ivy Tech-Indianapolis transfers present transfer credit. The number of new IUPUI students who previously attended Ivy Tech Indianapolis increased this year following a slight decrease for the prior fall term. The average credits transferred has increased over time and hit an all-time high of 32.3 hours this fall.

Total Credits Transferred



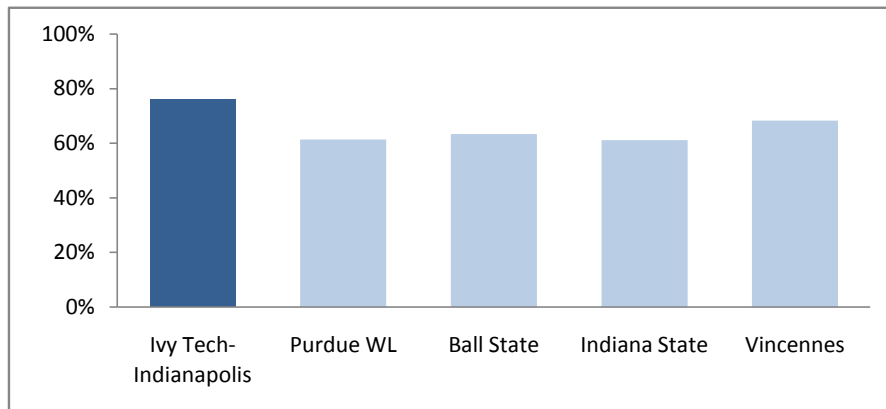
Average Credits per Transfer



Distributional Articulation of Accepted Transfer Credits from IUPUI's Top Feeder Institutions - Fall Semester 2008

Thanks to our course articulation agreements with Ivy Tech-Indianapolis, about 8 out of 10 credit hours transferred are articulated toward distributed credits. In comparison only about 60% of transferred credit hours are articulated toward specific course credits for students from IUPUI's other major feeder institutions with the exception of Vincennes University.

	Total	Distributed Credit	Undistributed Credit	Percent Distributed
Ivy Tech-Indianapolis	14,299	10,871	3,428	76.0%
Purdue WL	7,972	4,891	3,081	61.4%
Ball State	3,906	2,473	1,433	63.3%
Indiana State	2,046	1,250	796	61.1%
Vincennes	3,625	2,476	1,149	68.3%



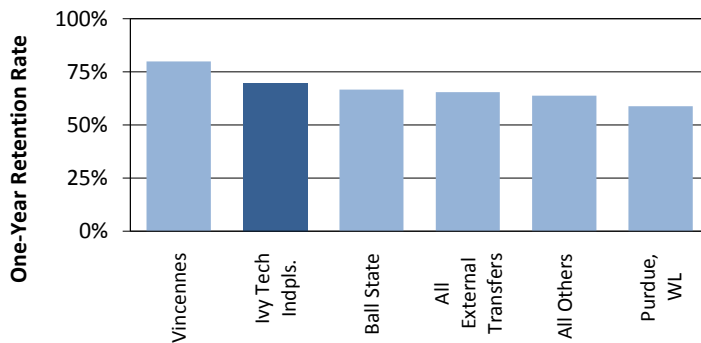
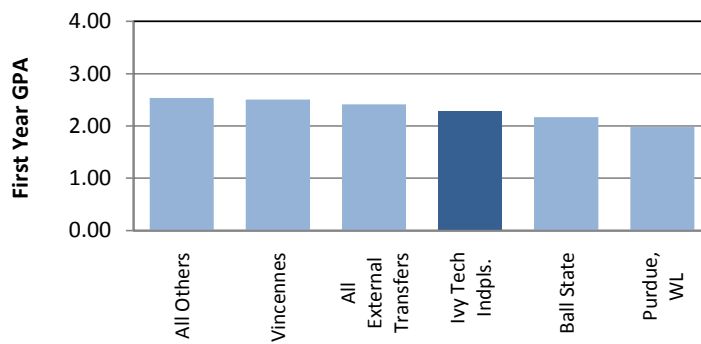
Comparative Performance at IUPUI of New Transfers
Fall 2007 New Transfers with Freshman Class Standing

Students who transferred from Ivy Tech-Indianapolis to IUPUI in Fall 2007 as freshmen attained slightly lower than average grades in their first year at IUPUI compared to all external transfers. Ivy Tech-Indianapolis transfers had the second highest one-year retention rate among IUPUI's major feeder institutions.

Institution	Number of Students	Average First Sem. GPA	Average First Year GPA	One-Year Retention Rate
Ivy Tech-Indianapolis	132	2.24	2.28	70%
Ball State	39	2.28	2.17	67%
Indiana State	6	*	*	*
Purdue, WL	34	2.09	1.98	59%
Vincennes	10	2.51	2.50	80%
All Others	326	2.59	2.54	64%
All External Transfers	547	2.45	2.41	65%

Note: Students are identified by their last institution attended.

*Figures not reported due to small number of transfers.



Comparative Performance at IUPUI of New Transfers
Fall 2007 New Transfers with Sophomore and Higher Class Level

Among students who began at IUPUI with sophomore or higher class level, the average first-year GPA and one-year retention rate for Ivy Tech-Indianapolis transfers were slightly lower compared to transfers from other major feeder transfer institutions.

Institution	Number of Students	Average First Sem. GPA	Average First Year GPA	One-Year Retention Rate
Ivy Tech-Indianapolis	251	2.59	2.52	67%
Ball State	67	2.78	2.75	69%
Indiana State	41	2.83	2.77	73%
Purdue, WL	103	2.93	2.87	70%
Vincennes	48	2.59	2.58	67%
All Others	531	2.81	2.74	70%
All External Transfers	1041	2.76	2.69	69%

Note: Students are identified by their last institution attended.

